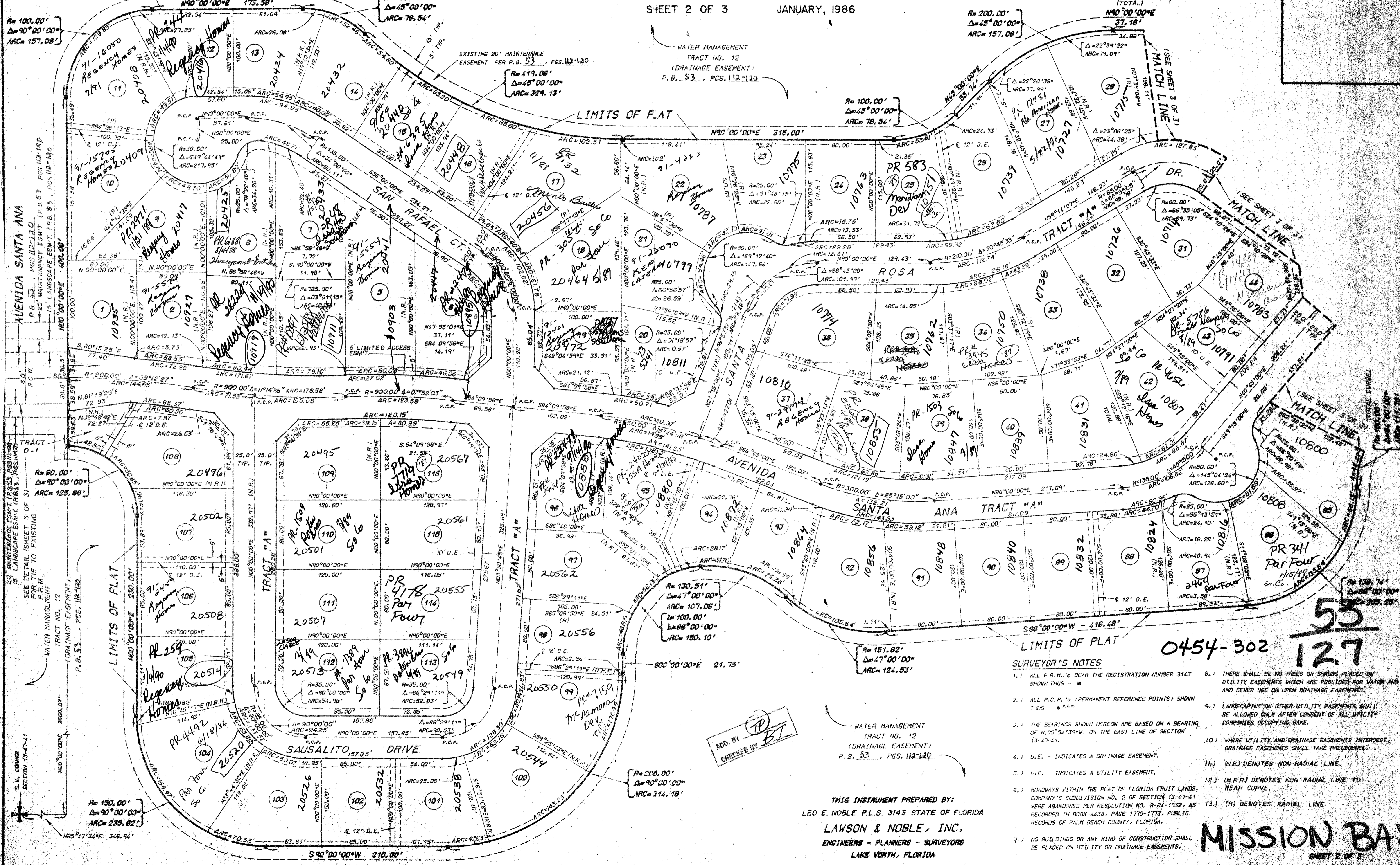
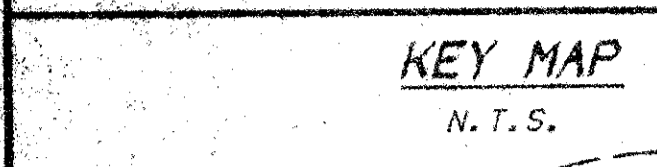
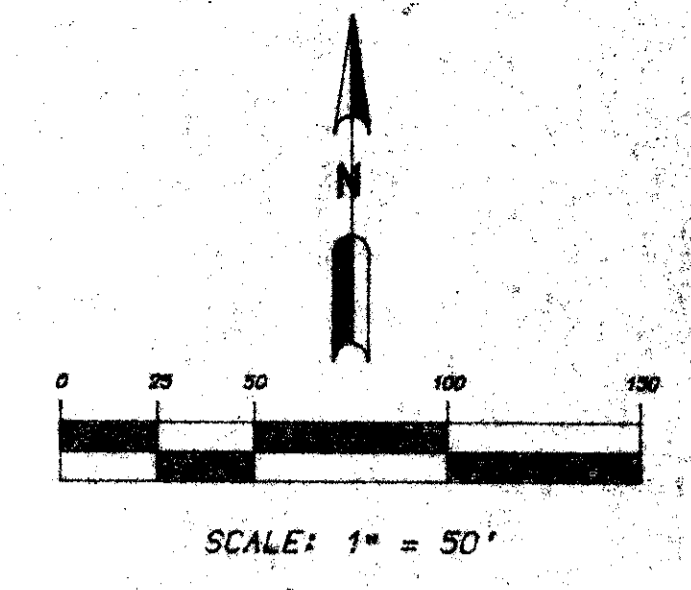


53/127

127

# TRACT C

A REPLAT OF ALL OF TRACT C OF THE PLAT OF MISSION BAY A P.U.D., AS RECORDED IN PLAT BOOK 53, PAGES 112 - 120, OF THE PUBLIC RECORDS OF PALM BEACH COUNTY, FLORIDA. SECTION 13, TOWNSHIP 47 SOUTH, RANGE 41 EAST



DRAWING NUMBER

DRAWING NUMBER

DRAWING NUMBER

PLANNING NUMBER  
53/127  
PLANNED CORPORATION - IRVINE, CALIFORNIA  
RECORDED BY NUMBER 0754

PLANNING NUMBER  
53/127  
PLANNED CORPORATION - IRVINE, CALIFORNIA  
RECORDED BY NUMBER 0754

PLANNING NUMBER  
53/127  
PLANNED CORPORATION - IRVINE, CALIFORNIA  
RECORDED BY NUMBER 0754

ADD. BY TP  
CHECKED BY BT

THIS INSTRUMENT PREPARED BY:  
LEG E. NOBLE P.L.S. 3143 STATE OF FLORIDA  
**LAWSON & NOBLE, INC.**  
ENGINEERS - PLANNERS - SURVEYORS  
LAKE WORTH, FLORIDA

- SURVEYOR'S NOTES**
1. ALL P.R.M.'s BEAR THE REGISTRATION NUMBER 3143 SHOWN THIS -
  2. ALL P.C.P.'s (PERMANENT REFERENCE POINTS) SHOWN THIS -
  3. THE BEARINGS SHOWN HEREON ARE BASED ON A BEARING OF N.20°54'33"W. ON THE EAST LINE OF SECTION 13-47-41.
  4. D.E. - INDICATES A DRAINAGE EASEMENT.
  5. U.E. - INDICATES A UTILITY EASEMENT.
  6. ROADWAYS WITHIN THE PLAT OF FLORIDA FRUIT LANDS COMPANY'S SUBDIVISION NO. 2 OF SECTION 13-47-41 WERE ABANDONED PER RESOLUTION NO. R-84-1932, AS RECORDED IN BOOK 4438, PAGE 1770-1773, PUBLIC RECORDS OF PALM BEACH COUNTY, FLORIDA.
  7. NO BUILDINGS OR ANY KIND OF CONSTRUCTION SHALL BE PLACED ON UTILITY OR DRAINAGE EASEMENTS.
  8. THERE SHALL BE NO TREES OR SHRUBS PLACED ON UTILITY EASEMENTS WHICH ARE PROVIDED FOR WATER AND SEWER USE OR UPON DRAINAGE EASEMENTS.
  9. LANDSCAPING ON OTHER UTILITY EASEMENTS SHALL BE ALLOWED ONLY AFTER CONSENT OF ALL UTILITY COMPANIES OCCUPYING SAME.
  10. WHERE UTILITY AND DRAINAGE EASEMENTS INTERSECT, DRAINAGE EASEMENTS SHALL TAKE PRECEDENCE.
  11. (N.R.) DENOTES NON-RADIAL LINE.
  12. (N.R.R.) DENOTES NON-RADIAL LINE TO REAR CURVE.
  13. (R) DENOTES RADIAL LINE.

**MISSION BAY**  
SHEET 2 OF 3

53  
127  
0454-302